

Sandy Town Council

To: Cllrs P N Aldis, P Blaine, T Cole, A M Hill, W Jackson, T Knagg, G Leach, C Osborne, M Pettitt, M Scott, P Sharman, J Sparrow, S Sutton and N Thompson

You are hereby summoned to attend a meeting of Sandy Town Council to be held in the Council Chamber at 10 Cambridge Road, Sandy, Bedfordshire on Monday 17 September 2018 commencing at 7.30pm for the purpose of transacting the items of business below



Chris Robson
Town Clerk
10 Cambridge Road
Sandy
SG19 1JE
01767 681491
11 September 2018

MEMBERS OF THE PUBLIC AND PRESS ARE WELCOME TO ATTEND THIS MEETING

A G E N D A

1 Apologies for Absence

To receive any apologies for absence.

2 Declarations of interest and requests for dispensations

Under the Localism Act 2011 members of Council are not required to make oral declarations of interest at meetings but may not participate in discussion or voting on any items of business in which they have a Declarable Pecuniary Interest (DPI) and under Sandy Town Council's Standing Orders must leave the room for the duration of all discussion on such items. (All members' register of interests are available on the Sandy Town Council website or on application to the Clerk.)

*This item is included on the agenda to enable members to declare new DPIs and also **those who wish to do so** may draw attention to their stated DPIs and also any non-declarable personal interests which they have declared under Sandy Town Council's adopted Code of Conduct and which may be relevant to items on the agenda.*

- i) Disclosable Pecuniary Interests*
- ii) Non Pecuniary Interests*
- iii) Dispensations*

3 Public Participation Session

To receive questions and representations from members of the public.

Sandy Town Council

4 Minutes of previous Town Council meetings

To consider the Minutes of the meeting of Sandy Town Council held at 7.30pm on Monday 6 August 2018 and to approve them as a correct record of proceedings.

5 Minutes of committees and recommendations therein

To receive and note the minutes of the meetings of the following committees and sub-committees and (if applicable) to approve recommendations therein which do not arise elsewhere.

- i) Development Scrutiny Committee held on 13 August 2018 and 3 September 2018
- ii) Policy, Finance and Resources Committee held on 3 September 2018

RESOLVED to RECOMMEND that the Council approve the Friends of Sandy Christmas Lights Constitution subject to the agreed changes and review by the Local Council Public Advisory Service.

APPENDIX I

RESOLVED to RECOMMEND that the Council agree that the FOSCL sets up its own bank account as an independent body.

RESOLVED to RECOMMEND that the Council approves the division in costs between the Council and FOSCL subject to mulled wine expenditure and income falling to the Council for the 2018 event.

RESOLVED to RECOMMEND that the Council continues to fund the 2018 event from its event budget line and that those costs for which the FOSCL are now responsible will be taken from earmarked reserves set aside to support the event.

RESOLVED to RECOMMEND that any remaining earmarked reserves held after the 2018 event be donated to the FOSCL.

RESOLVED to RECOMMEND that an event review report come back to Council following the AGM in January 2019.

Sandy Town Council

6 Financial Matters

- i) To note a balance sheet and detailed financial report showing income and expenditure against the revenue budget for the year to 31 August 2018 (previously circulated and scrutinised at a meeting of the Policy, Finance and Resources Committee on 3 September 2018).
- ii) To note a budget overview report (previously circulated and scrutinised at a meeting of the Policy, Finance and Resources Committee on 3 September 2018).
- iii) To note a list of payments made since the last Town Council meeting (previously circulated and scrutinised at a meeting of the Policy, Finance and Resources Committee on 3 September 2018).

7 Reports from Central Bedfordshire Councillors

To receive reports from Sandy's Central Bedfordshire Councillors. Members have already received Central Bedfordshire Council's briefing notes.

8 Sandye Place Academy

- i) To receive and consider a joint statement from Central Bedfordshire Council and Sandye Place Academy. APPENDIX II
- ii) To receive and respond to correspondence from the Chairman of the Sandy Carnival Committee. APPENDIX III
- iii) To receive and respond to correspondence from the Chairman of the Sandy and District Horticultural Association. APPENDIX IV

9 Action List

To receive any updates and note the action report. APPENDIX V

10 Community Plan

To receive and consider an amended Community Plan recommended for approval by the Community Plan Working Group. APPENDIX VI

11 Meeting with Alistair Burt MP

To receive feedback from a recent meeting between STC representatives and Alistair Burt MP.

12 Election of Council Representatives

To elect Members to represent the Council on the following groups;

- Sandy Green Wheel
- The Riddy and Pinnacle Management Group
- Friends of Sandy Christmas Lights Trustees

Sandy Town Council

13 Election of Committee Member to the Grievance Committee

To elect a Member to replace the late Cllr D Sharman on the Grievance committee.

14 Anglian Water Increases

To consider an article suggesting Anglian Water would be increasing rates above inflation for homes served in the east of England.

APPENDIX VII

15 Councillor Surgeries

To carry out a six-month review of Councillor surgeries held and resolve whether surgeries are to continue.

APPENDIX VIII

16 Crime and Policing

i) To receive and note recent CCTV incidents.

APPENDIX IX

ii) To receive and note the most recent crime statistics for Sandy.

APPENDIX X

iii) To note that the Bedfordshire Police and Crime Commissioner will be holding a public surgery in the Town Council Chamber on 29th October 2018. This will be followed by a meeting with Councillors at 6:30pm.

17 Reports from Representatives

To receive reports from representatives on outside bodies.

To receive a report from Cllr Sutton on the ATC Civilian Committee AGM.

APPENDIX XI

18 Representation/Conference Attendance

To consider whether the Town Council wishes to send representation to the following meetings/conferences;

Bedfordshire Association of Town and Parish Councils Annual General Meeting on 18th October 2018.

APPENDIX XII

19 News Release

20 Chairman's Items

21 Date of Next Meeting: 29 October 2018

CHARITY CONSTITUTION

Suitable for small charities with an annual income under £5,000 that don't own a building or employ people and do not intend to register with the Charity Commission.

NAME: The charity's name is Friends of Sandy Christmas Lights

THE PURPOSES OF THE CHARITY ARE: -

- To promote the Community Event which leads to the switch on of the Town's Christmas Lights Display. **NB the provision of the Town's Christmas Lights display is provided by Sandy Town Council.**
- To provide entertainment at the event.
- To generate funds to support the event.

TRUSTEES

The charity shall be managed by a committee of trustees who are appointed at the Annual General Meeting (AGM) of the charity.

CARRYING OUT THE PURPOSES

In order to carry out the charitable purposes, the trustees have the power to:

- (1) raise funds, receive grants and donations
- (2) apply funds to carry out the work of the charity
- (3) co-operate with and support other charities with similar purposes
- (4) do anything which is lawful and necessary to achieve the purposes

The Trust shall indemnify its trustees for any personal financial liability by way of insurance

MEMBERSHIP

The charity shall have a membership. People who support the work of the charity and are aged 18 or over, can apply to the trustees to become a member ~~at the AGM~~. Once accepted by the trustees, membership lasts for 1 year and may be renewed. The trustees will keep an up-to-date membership list to comply with the General Data Protection Regulation and Data Protection Act 2018.

The trustees may remove a person's membership, **by majority vote**, if they believe it is in the best interests of the charity. The member has the right to be heard by the trustees before the decision is made, **can be accompanied by a friend and has the right of appeal.**

ANNUAL GENERAL MEETING - AGM

- (1) The AGM must be open to the public and held every year within eight weeks of the event. Fourteen days' notice must be given to all members telling them what is on the agenda. Minutes must be kept of the AGM.
- (2) There must be at least 7 members present at the AGM.
- (3) Every member has one vote.
- (4) The trustees shall present the annual report on its accounts and activities.
- (5) The AGM will appoint an individual or a company to audit the accounts.
- (6) Any member may stand for election as a trustee.
- (7) At the AGM they will elect a chair, vice-chair, treasurer, general secretary and membership secretary and other officers allowed for under this constitution.
- (8) Members shall elect between 6 and 10 trustees to serve for the next year. They will retire at the next AGM but may stand for re-election.
- (9) One Trustee must be an elected Council Member. Sandy Town Council will elect this Member and this will be done at the Council's Annual Meeting in May. Due to election dates, one or more named Council Member representatives may cover a Trustee role during any one year but this will remain as one Trustee position.

TRUSTEE MEETINGS

- (1) Trustees must hold at least 3 meetings each year. Trustees must act by majority decision.
- (2) At least 3 trustees must be present at the meeting to be able to take decisions. Minutes shall be kept for every meeting.
- (3) If trustees have a conflict of interest they must declare it and leave the meeting while this matter is being discussed or decided.
- (4) During the year, the trustees may appoint up to 2 additional trustees. They will stand down at the next AGM but be eligible for election.
- (5) The trustees may make reasonable additional rules to help run the charity. These rules must not conflict with this constitution or the law.

MONEY AND PROPERTY

- (1) Money and property must only be used for the charity's purposes.

- (2) Trustees must keep accounts. The most recent annual accounts can be seen by anybody on request.
- (3) Trustees cannot receive any money or property from the charity, except to refund reasonable out of pocket expenses.
- (4) Money must be held in the charity's bank account. All cheques must be signed by 2 of the 3 trustees listed on the bank account.

GENERAL MEETINGS

If the Trustees consider it is necessary to change the constitution, or wind up the charity, they must call a General Meeting so that the membership can make the decision. Trustees must also call a General Meeting if they receive a written request from the majority of members. All members must be given **fourteen** days' notice and told the reason for the meeting. All decisions require a two-thirds majority. Minutes must be kept.

- (1) Winding up - any money or property remaining after payment of debts must be given to a charity with similar purposes to this one **or to Sandy Town Council to hold in trust for the establishment of a new committee.**
- (2) Changes to the Constitution - can be made at AGMs or General Meetings. No change can be made that would make the organisation no longer a charity.
- (3) General Meeting - called on written request from a majority of members.
- (4) Trustees may also call a General Meeting to consult the membership

SETTING UP THE CHARITY

This constitution was adopted on **19th September 2018** by the people whose signatures appear below. They are the first members of the charity and will be the trustees until the AGM, which must be held within eight weeks of the first Community Event under the auspices of this Constitution.

Signed	Print name and address
_____	_____
_____	_____

Joint Statement from the Executive Governors of Sandye Place Academy and the Director of Children's Services at Central Bedfordshire Council.

"Following the decision by the Department for Education (DfE) to close Sandye Place Academy, we have today written to the parents and carers of our pupils to update them on this situation. The school will close in September next year, until then the staff at the school remain devoted to providing the best education possible.

"All pupils will have access to alternative local schools following the closure. The Local Authority will start working with parents to plan for this in the coming months."

ENDS

Notes:

- Parents wanting to talk about future school places should contact admissions@centralbedfordshire.gov.uk



20th August 2018

Dear Sandy Town Council ???

Re: Future of Sandye Place Academy

I am writing to you as Chairman of Sandy Carnival Association with regards to the venue we use for Carnival Day, Sandye Place Academy.

As you're aware Sandy Carnival Association have held their event in the grounds of Sandye Place for many years, as one of the 'Big Four' in the Sandy calendar it is a highly anticipated day for hundreds of Sandy residents.

Unfortunately I have been unable to book the school grounds for Sandy Carnival 2019 due to the uncertainty of what will be happening to the premises over the next 12 months.

Therefore I am writing to you, as Sandy Town Council, to ask what you would be able to do to help.

We have in past years been offered Sunderland Road playing field, which we were very grateful for. Sadly the wind tunnel effect meant that we lost many stall holder gazebos, which affected future bookings and one of our main tents, which was very costly. Sandye Place is far more sheltered, contained and centrally placed making it a perfect venue for events such as ours.

I look forward to hearing from you in due course

Yours sincerely

Hayley Stewart

Chairman

Sandy Carnival Committee

From:
Sent: 20 August 2018 14:15
To: Mayor
Subject: Available venues in Sandy for the Carnival and the Sandy Show in the future

Dear Sir,

The impending closure of the Sandye Place Academy in late summer 2019 now seems to be public knowledge within the town.

The Sandy Carnival uses the grounds of the Academy mid-way through the summer term and I understand that this organisation has already been told that their booking for June 2019 cannot be accepted.

The Sandy Show celebrated its 150th anniversary this year, since its beginnings in 1878. There have only been a few interruptions within this period due to World Wars etc.

For the majority of this period the Show has taken place within the buildings/grounds of Sandye Place, organised and promoted by the Sandy Horticultural Association.

It seems likely that the Horticultural Association will also be refused the option to book the school hall for 2019 and future years too, although we are unable to confirm this until the school office is in action again at the beginning of the Autumn Term in a couple of weeks' time. I am not aware of any other hall that is large enough to accommodate the Show within Sandy.

Both the Carnival and the Sandy Show are each one of the four major events in the year that take place in the town of Sandy annually; the others being the Scouts Fireworks event in November and the Council Christmas Lights Switching-on early in December.

I would like to know what consideration has been given to these events by the Sandy Town Council and Central Beds Council, and what alternatives are being proposed for their continued survival, in the light of the Sandye Place Academy's impending closure.

I look forward to a prompt response to this request.

Regards

Andrew Havergal

Chair of Sandy & District Horticultural Association

Think before you print

Town Council - Action list

Subject	Action to be taken		Response/ Agenda no.
	Minute	Action	
Meeting 9/11/15			
East West Rail Link	(89-15/16)	Town Council strongly support the East West rail link coming through Sandy and to lobby the relevant authorities.	Members raised the importance of reaching a decision on the route of the rail link in a meeting with A. Burt on 7 th September 2018. No further information on route or development has been provided.
Meeting 21/5/18			
A1 – Local Issues	(19-18/19)	To push for decisions on the future of the A1 and action on safety and environmental issues.	Councillors addressed concerns about the A1 with A. Burt MP. Feedback from a meeting with A. Burt to be provide at agenda item 11.



SANDY
Town Council

LOCAL COUNCIL
AWARD SCHEME
FOUNDATION

A Vision for Sandy

Sandy's Community Plan



June 2018

The Community plan builds on the work of the 2011 Town Plan

T 01767 681491
F 01767 692527
E admin@sandytowncouncil.gov.uk

www.sandytowncouncil.gov.uk

Sandy Town Council
10 Cambridge Road, Sandy, SG19 1JE

Registered office: Sandy Town Council, 10 Cambridge Road, Sandy, SG19 1JE

Foreword

The Community Plan for Sandy, including Beeston, which follows, owes much to the work which was done between 2009 and 2011, in preparing our Town Plan. Since then, some of the objectives identified then have been achieved but others remain ambitions. Furthermore, potential decisions elsewhere may well affect Sandy in a profound way. Central Bedfordshire Council has prepared its Local Plan which is still subject to review and approval at a national level. Whilst the current understanding is that the current review of the A1 is unlikely to result in the major change that is needed in our area, we continue to press for long-needed relief. Plans for East-West rail, though not immediate, appear much more promising and the line is expected to pass through the “Sandy Corridor”.

It is important that Sandy has an up to date plan in place, so that the needs of this community are clear, particularly when funding becomes available as the result of development or otherwise. It is therefore intended that this plan becomes a living document which will be updated as circumstances change. It is also intended that Sandy Town Council will continually monitor the plan to ensure as far as possible that it is implemented. The plan has been prepared by a working group of members of the Town Council, taking into account consultations with local people. However, the current completed version has been prepared for further consultation with the aim of enabling any omissions to be corrected and to ensure that we have captured as far as possible the views of residents.

I would like to thank colleagues on the working group for their commitment to this process and in particular the Town Clerk and his staff for their hard work in helping to prepare what is hoped to be a useful document which will contribute to the wellbeing of the Town in the years going forward.



Councillor Peter Blaine
Chairman of the Community Plan Working Group

Contents Page

Foreword	2
Introduction	3
A Brief History of Sandy	4
Sandy Today	6
The Community Plan Process	9
Key Themes	
Arts and Culture	10
Environment, Health and Wellbeing	12
Sport and Leisure	17
Housing	19
Town Centre – Economic Activity	21
Transport	26
Sandy’s Long-Term Requirements	32
The Way Forward	32
Sandye Pace – A Unique Solution	35
Appendix 1 – Glossary of Terms	
Appendix 2 – Bench Mark Survey Results	
Appendix 3 – Housing Consultation Results	
Appendix 4 – Draft Plan Consultation Results	
Appendix 5 – Concept Planning Statement	

A Brief History of Sandy

Sandy is a small town in East Bedfordshire which takes its name from the Sand Hills of its distinctive rural setting. Located on the Great North Road (A1) Sandy has the benefit of easy access to the main commercial centres of London (only 45 minutes by train), Stevenage, Bedford and Cambridge. The population of the town is currently c 12,000 based on approximately 5,000 dwellings. The town is surrounded by the pleasant landscape of East Bedfordshire with its market gardening heritage and variety of villages, woods, heathlands rivers and brooks.

Sandy's long and fascinating history commences some thousands of years before the arrival of the Romans, yet it is this event which is perhaps the most significant as the story unfolds. The Roman invaders left the town early in the fifth century and in early English times, Sandy formed part of the Kingdom of Mercia. The Manor of Sandeia is recorded in the Domesday Book, as being the area that we now know as Sandy.

The present-day parish of Sandy, excluding Beeston, still traces the same area as the original 4,000 acre Manor. By 1290 it had split into three smaller estates: a smaller Sandy Manor still under the Beauchamps and two under local monasteries: Hasells under Chicksands Priory and Girtford under Cauldwell Priory, Bedford.

Although there are remains of an earlier church, it is the thirteenth century that gives the earliest formal record of a religious building being in existence. In 1240, William de Beauchamp is recorded as granting a church in the town to Cauldwell Priory.

Almost a century later a chantry was established. Records give the date of 1332 as being when the chapel was endowed for the chanting of masses. Sandy Manor descended to the Catlin family and then by marriage to Lord Spencer, whose son was created Earl of Sunderland.

In 1670 it was acquired by Sir Humphrey Monoux of Wootton, a descendant of a former Lord Mayor of London and one of the Justices who committed John Bunyan to prison in Bedford.

His grandson Humphrey rebuilt the mansion - now the site of a middle school, while another grandson built the rectory in 1731, demolished in 1964. Ownership of Sandye Place passed through several names in the 19th Century including Brandreth, Foster and Edgecumb.

Girtford and Hasells Manors had passed to the Crown at the dissolution of the monasteries in 1539 under Henry VIII. The King gave Girtford to John Burgoyne in 1541 and Hasells to Francis Pygott in 1542. Hassells or as now spelt "Hazells" Hall, which stands in a wooded park north east of Sandy, dates back to 1660 but was enlarged extensively twice during the 18th century after passing into the Kingsley family and then in 1748 by marriage to the Pymys. Hasells Hall was saved from demolition in 1979 and has since been converted to 12 houses and flats. Sir William Peel, a son of Sir Robert the former Prime Minister and founder of the Police Service, bought the estate in 1851 and his brother Arthur Wellesley Peel built The Lodge, a fine residence standing in over 200 acres

in 1870. This imposing property is now the headquarters of the RSPB.

Beeston, mentioned in the Domesday Book, is now in Sandy parish but was originally part of Northill. The manorial rights have been held over the centuries by several private individuals, notably in recent times by Godfrey Thornton of Moggerhanger House, Allen Jeeves, Albert George Jeeves and now Sandy Town Council, as successors in title to Sandy Urban District Council, which acquired the freehold of The Green in 1956.

A new Turnpike Trust set up in 1725 brought improvements to the Great North Road and in 1758 came the completion of the Ivel Navigation Scheme, taking coal lighters from Tempsford through Biggleswade to Shefford. This was followed a century later by the building of the Great Northern Railway and afterwards the Sandy to Potton Railway built privately by Captain William Peel. The line was later taken over by the Bedford and Cambridge Railway, eventually linking Oxford to Cambridge. At that time, Sandy had three stations: two on the existing site, one for each railway, and one at Girtford on the Bedford line. Each had its own station master.

The explosion in communications throughout the two centuries allowed Sandy to fully exploit its best asset, the acres of rich farming land surrounding the town. Market gardening thrived as growers were able to transport produce quickly from the fields to the town and on down the Great North Road and later on the railway to the London markets. During the late 18th century almost all the land cultivated in Sandy was in open fields with names such as Austred, Belland, Chester, Down, Low, Kenwick, Mead and Middle - from where the present-day

Middlefield Industrial Estate in Sunderland Road takes its name.

By the turn of this century, many of the town's present landmarks were in evidence: Potton Road cemetery was opened in 1891; the Conservative Club was built the same year and enlarged in 1897 to include a large concert hall and facilities to house the town's lending library. The Town Hall, interestingly never used as a town hall, now the Roundabout Club, was built in 1906 and by 1920 three schools were listed.

The population of Sandy grew steadily from 1,115 in 1801 to 2,118 in 1861 and 3,110 in 1901. Sandy Parish Council was created in 1894 and its first meeting was held in the new Council Chamber on the first floor of the recently constructed Fire Station in Cambridge Road. In 1927 Sandy Urban District Council was formed conferring "town" status on Sandy. Local Government Reorganisation in 1974 saw the demise of UDCs and the formation of a new Sandy Parish Council which later that year changed its name to Sandy Town Council.



View of Sandy from The Pinnacle

During the lifetime of the Town Council Sandy has continued to evolve whilst retaining its distinctive setting in a rural environment. The expansion of the town which began in earnest after the second World War included the development of a London "overspill" housing scheme between Sunderland

Road and St Neots Road and continued in the 90s with the creation of new housing at Fallowfield and Ivel Park. During the 21st century housing development has been on a smaller scale, with more infill developments but the potential of Sandy as a commuter town for workers in London, Cambridge, Bedford, Stevenage and Peterborough remains thanks to the A1 and the railway links.

Beeston is a delightful hamlet which sits within the parish of Sandy and is half a mile to the south of Sandy town centre. The development of the Great North Road over the centuries means that Beeston is now bisected by the A1. This contributes to its separation from Sandy and a strong local sense of being an independent community. In the heart of Beeston is an attractive 13-acre traditional village green which is surrounded by several ancient buildings.



Beeston Village Green

Sandy Today

Today Sandy is one of Central Bedfordshire's main towns, growing over the years the town has developed a strong community with mixed needs and ambitions.

Sandy is governed by two tiers of local government: the Town Council, and the Unitary Authority of Central Bedfordshire. It is within the Parliamentary constituency of North East Bedfordshire.

The town is around 50 miles (69 km) north of Central London with the county town of Bedford 8 miles (13 km) to the west. St Neots, the largest town in Cambridgeshire, lies 7 miles (11 km) to the north with Biggleswade lying 3 miles (4.8 km) to the south. The town sits within the Greensands Country and the land surrounding the town is dominated by a range of low hills known as the Sand Hills with the River Ivel running through the town.

The town's train station is located on the East Coast Main Line and provides trains south to London King's Cross and north to Peterborough. Journey times to London King's Cross typically range from 45 minutes to one hour. The station is managed and served by Thameslink and Great Northern.



Sandy High Street

enhancement and improvements when planning for Sandy's future;

1. Social and Cultural Assets

People who live and / or work in Sandy, adding to its varied community, are one of its greatest assets and the wide range of community groups and other organisations can help shape the future of Sandy and must be consulted with and listened to if we are to achieve a shared vision for the future of Sandy.

2. Physical/Environmental

Sandy has numerous physical and environmental assets which need to be protected, enhanced and used to create an environment to support and provide enjoyment for the community.

- The town includes a central market place and high street which is used for annual community events, although due to the need for road closures use for more regular events is limited.
- Useable formal and informal public green spaces, particularly The Riddy nature reserve and The Pinnacle not only provide the community with valuable outdoor space they also provide opportunities for visitor attraction.
- Sandy is well placed for transport connections, with the A1 and rail line, both of which could be

enhanced or changed for the benefit of the town and future growth.

3. Economic

- The town has a mix of employment, but this could be enhanced if properly planned and linked with the East West Rail development. Enhancing growth in local employment through extension/relocation is important.
- There is a variety of eating and drinking establishments, as

well as independent retailers in the town, the core of the town centre should be protected and enhanced.

- Tourism is a recognised asset for any town and Sandy's link with the RSPB and proximity to regional cycling routes must be encouraged and supported.
- The town has areas of designated industrial use which support national and local businesses.

Sandy in Numbers



The 2011 census put Sandy's population at 12,600. In 2013 the estimated population of Sandy had grown to 13,100.



In 2015 the number of dwellings in Sandy stood at 5,620



Sandy is served by 4 lower schools, 1 Middle School and 1 Upper School



2 doctor's surgeries'



2 Chemists



2 Dentists



1 Post office



1 Library



4 Churches



5 Public Houses



5 Restaurants



3 Cafes



3 Supermarkets/National food stores



5 Take Aways



3 Newsagents/
Convenience
stores



1 Car Park (Free)



1 Petrol Station



1 Hotel



2 Nursing Homes



3 Sheltered Accommodation



1 Sports Centre/Hall



1 All-Weather Pitch



6 Play Parks/Recreation



1 Nature Reserve



1 Village Green



1 Village Hall



2 Social Clubs



1 Train Station

The Community Plan Process

A Community Plan aims to assess both needs and aspirations of a community including how it sees itself developing over both the short term and long term. A Community Plan should conclude with a clear vision of the Town Priority needs and include action points. A Community Plan should provide a vehicle for communities to articulate their needs and aspirations in a structured form, with an evidence base.

Community led planning should work on a step by step basis that enables local people and organisations to participate in, and collectively contribute to improving the social, economic, environmental and cultural well-being of their local area.

This approach to community engagement originated in the late 1970's and has been developed over the years since. The need for community plans is because of the gradual withdrawing of public sector services and the increasing need for communities to take more active a role in looking after a communities' affairs. Over the years, community led plans have taken on different names including village appraisals, Town Plans, market town action plans and more recently via the Localism Act 2012 neighbourhood plans, which have concentrated solely on land use.

A vision for Sandy – Sandy's Community Plan Process

In the summer of 2009 the Sandy & Beeston Town Plan Steering Group (TPSG) was formed from residents of Sandy and Beeston. This group was independent of,

but supported by Sandy Town Council. The aim of the group was to find out what local people thought about their community and to produce a plan based on those views which would look to influence future development in Sandy.

The steering group then began a series of consultation events in the community and a questionnaire which was circulated to every house in Sandy, in total over 1000 questionnaires were completed and returned. In 2011, following the analysis of all the information and opinions received, the Town Council published the Sandy & Beeston Town Plan.

Since the publication of the Town Plan various changes in planning law and the pressure on planning authorities to produce Local Plans has resulted in changes to the documentation local planning authorities use and respond to. As a result community plans, have emerged as the next step from town and parish plans in helping shape the future of communities.

In 2017 Sandy Town Council set up a working group to look at developing a community plan as a step on from the existing Town Plan. The plan will build on the Town Plan's results and proposals with an aim to produce a comprehensive document that clearly defines the needs of future development in Sandy. Sandy's community plan will be a tool Central Bedfordshire Council can use when it is negotiating with developers and shaping the town's future via its Local Plan.

Arts and Culture

Introduction

This section explores the current picture in terms of the arts and culture on offer in Sandy and considers how cultural facilities/activities can be improved to help enhance the town and the cultural opportunities open to residents and visitors.

Arts and culture is important to help improve the vitality of the town. It is recognised that it is important to provide venues for all members of the community to meet and celebrate. It is also important to provide areas for the creation and experience of art and culture.

In 2017 survey participants identified a lack of available community spaces for workshops, community entertainment and music within Sandy.

53% of people surveyed rated the town's cultural and arts offering as negative

54% of people surveyed indicated they would not recommend a visit to Sandy

Source: People and Places 2017 Benchmarking Report

Issues Identified in the 2011 Town Plan

Issue	Is this still relevant ?
Provision of a Town Museum	Yes
Demand for additional community groups or clubs	The Council holds and publicises a list of Community Groups and clubs in Sandy. Several new groups have opened since the 2011 plan (Sandy Guild, Friendship Group, Woman's Institute)

Issues Identified through Arts and Culture Focus Group

Issue	Solution	Action	Who	In next 5 years	Long Term
Demand for venues with storage for use by community groups	Work with existing venues to open up availability	Open up dialogue with Sandy Upper School regarding use of school for community groups.	STC	✓	
		Identify current venues and space available.	STC	✓	
	Identify new community venues as a key need for CIL and Section 106 negotiations	Consult with community groups about their needs.	STC	✓	
		Identify a new venue, including building specifications as part of a CIL/Section 106 wish list.	STC		✓

Issue	Solution	Action	Who	In next 5 years	Long Term
Provision of a Town Museum	Use of vacant buildings in the town centre	Complete a review of town centre to identify suitable buildings for both a permanent museum and temporary exhibitions.	STC SHRG	✓	
		Compile landlord details for all town centre buildings and connect landlords of suitable units with SHRG.	STC	✓	
	Identify need for a purpose built museum as a part of CIL and Section 106 negotiations	Identify a new venue, including building specifications as part of a CIL/Section 106 wish list.	STC		✓
Lack of awareness around existing cultural and entertainment opportunities	Greater shared publishing/ advertising between organisations and groups	Contact all community groups and organisations to remind them of ability to advertise with the Council and push events through social media	STC	✓	



Between 2016 and 2018 the Town Council worked with Central Bedfordshire Council on the Story in Stone Project. Which saw the creation and installation of public art.



Environment, Health and Wellbeing

Introduction

This section explores the current picture in terms of issues around health and wellbeing in Sandy and outlines priorities for the Town Council and community to help improve outcomes for the people of Sandy.

In a 2017 consultation carried out by Central Bedfordshire Council participants identified the following key environmental concerns;

- Protection of Wildlife habitat associated with land to the east of Sandy
- Air and noise pollution from the A1 and A603 and gridlock through the town
- Greater promotion of renewable energy in the area
- Addressing flood risk and drainage issues, especially if new development is to occur in the town. There should be no further development on flood plains

During the same consultation 59% of participants rated Health Care as the priority for infrastructure improvements in the area. The need for an additional surgery or a health care hub was identified by the majority of consultation participants, with particular reference to the need for a surgery to the north of Sandy.

The consultation also identified several other key factors that participants rate as important for individual and community wellbeing.

Open space was identified as a premium factor for quality of life and the protection and enhancement of Sandy's green spaces was important to the majority of participants.

Protection and enhancement of the river level. Concerns were expressed about the level of work carried out by the Environmental agency.

Protect The Pinnacle area from any future development and enhance the nature reserve and green areas around Sandy.

Source: Central Bedfordshire Council Community Plan for Blunham, Moggerhanger, Sandy and Tempsford 2017

Issues Identified in the 2011 Town Plan

Environmental Issue	Is this still relevant ?
Campaign to reduce general litter	Litter has not been identified as an issue in recent consultation.
Campaign to reduce dog fouling	Yes
Improve maintenance of overgrown hedges	Yes
Fly tipping	Yes
Improvements to footpaths and bridleways	Yes
Provision of more allotments	Yes

Better access for wheelchairs/pushchairs	Not identified as an issue in recent consultation.
Green infrastructure issues	Yes
Extensions and improvements to community parklands	Yes

Health	
Issue	Is this still relevant ?
Residents' experiences of using the doctors' surgeries in the Town	Yes
Residents' experiences of using the dentist's surgeries in the Town	Yes
Residents' experiences of using the pharmacies	Not identified as an issue in recent consultation.
Demand for Good Neighbour Scheme	Scheme in place

Issues Identified through Environment, Health and Wellbeing Consultation

Issue	Solution	Action	Who	In the next 5 years	Long Term
Insufficient healthcare provision for Sandy	Creation of a new surgery or health care hub	Ensure need is identified clearly for Section 106 deliberations	STC CBC NHS CCG		✓
		Identify suitable areas of land and put bid forward to NHS to encourage health care development			
Effect of pollution from the A1 and the Sandy A1 Roundabout	Investigate ways to mitigate the effect of pollution	Open up dialogue with Environmental Agency	STC EA HE CBC	✓	
		Town Council to have survey on pollution commissioned			
	A1 to be relocated	Open up dialogue with Highways Agency	STC HE		✓
Protection of The Pinnacle from future development	Secure a renewed long-term lease from the landowner	Negotiate with landowner to secure lease by May 2018 (achieved)	STC Landowner	✓	

Protection of green space surrounding Sandy	Enhance and safeguard green space surrounding Sandy	Work with BRCC on Green Wheel and identify future funding streams	STC BRCC RSPB Tarmac CBC	✓	✓
Enhancement of existing green spaces	Identify ways to improve existing green spaces	Consult with residents to identify improvements	STC	✓	✓
		Set up working group meetings with BRCC	STC BRCC	✓	
	Greater relationship between organisations and the RSPB	Establish communication with the RSPB and understanding of their priorities for surrounding landscape	STC RSPB	✓	
Protection and enhancement of the River Ivel	Identify areas in need of improvements and lobby for work to be carried out by Environment Agency	Working group to work with local groups to identify areas of concern	STC CBC IPA	✓	
		Open up dialogue with Environment Agency	STC EA	✓	
Mitigating possible negative effects of the EA's River Ivel Restoration Works	Work alongside the EA to address concerns over the removal of Local Corner weir	Liaise with representatives of the EA to understand proposed restoration works to be implemented over the next 5 years	STC EA CBC IPA	✓	
Council allotment provision	Secure site at Beeston	Continue to work with CBC to transfer land to STC	STC CBC	✓	
		Work with BRCC and the Allotment Association on the set up of new allotments	STC CBC SDLGAA	✓	

	Identify site for a bigger allotment site	Negotiate with landowners	STC		✓
		Ensure allotment provision is negotiated as part of Section 106 for any new developments	STC CBC		✓
Flood risk	Investigate ways to mitigate the effects of flooding	Discuss with Environment Agency	STC EA	✓	✓
Promotion of renewable energy	Town Council to lead by example on all buildings and projects	Research conversion to LED street lighting	STC	✓	
		Ensure all Council office building lighting is LED	STC	✓	
		Research solar panels for Council depot	STC	✓	

Sports and Leisure

This section explores the sports and leisure offering in Sandy and considers the needs and desires of local sporting groups and the towns leisure facilities. The results of a 2016 consultation carried out by People and Places have been used as an evidence base for this section, along with the results of the Central Bedfordshire Council 2017 Local Plan consultation.

What you said Sandy needs in terms of sports and leisure;

- Both the People and Places survey and Central Bedfordshire Local Plan consultation showed that residents would like to see increased leisure facilities for families and young people, with a swimming pool coming out as the most desired facility.
- The Local Plan Consultation highlighted a need for a purpose-built community centre for use by many of Sandy's existing clubs and groups.
- Feedback has identified that the continued growth and success of all football teams would benefit from a purpose built or designated football facility in place of the existing facility.

Issues Identified in the 2011 Town Plan

Issue	Is this still relevant ?
Skate Park Improvements and extra Lighting	YES
Increased Youth Facilities	YES
Provision of new multi-use leisure facilities	YES
Additional Sports Facilities	YES

Issues Identified through Sports and Leisure Consultation

Issue	Solution	Action	Who	In the next five years	Long term
Skate Park Improvements	Re-establish evidence for skate park need to include within CBC Leisure Strategy as part of any future multi use sporting provision	Carry out further consultations with users of the skate park regarding improvements needed	STC CBC SSA	✓	✓

Provision of new multi-use leisure facilities	Investigate whether Sandy could support a swimming pool, cinema, bowling alley or soft play centre	Liaise with CBC on perceived need for Swimming facility and its inclusion within CBC leisure strategy	STC CBC		✓
Additional Sports Facilities (Need for football facility highlighted)	Identify need for a football facility similar to adjacent towns to CBC. Include specifics on what the facility should incorporate.	Include within Central Bedfordshire Council's Leisure Strategy for consideration during Section 106 discussions	CBC STC		✓
		Get joined up support from football clubs with evidence demonstrating the need for the facility	STC Football Clubs	✓	
Creation of destination park and gardens	Creation of a destination park and garden if a purpose-built football facility is created and the Bedford Road football ground relocated	Include long term ambition within Central Bedfordshire Council's Leisure Strategy for consideration during Section 106 discussions	STC CBC		✓
Improvement of the Jenkins Pavilion Sports ground offering	Commit Section 106 sports funds to the enhancement of the Jenkins Pavilion and area.	Liaise with CBC on a feasibility study on Sunderland Road improvements	STC CBC	✓	
		Work with CBC and sports clubs to consider improvements and funding streams	STC CBC Sports Clubs		✓

Housing

This section explores the housing need in Sandy and your views on residential development. The results of a 2016 consultation carried out by the Town Council have been used as an evidence base for this section, along with the results of the Central Bedfordshire Council 2017 Local Plan consultation.

What you said Sandy needs in terms of housing development;

- 41% of respondents favoured mixed development
- 22% of respondents felt that there needed to be more starter homes in Sandy
- 35% of respondents identified a need for help to buy schemes
- 35% of respondents identified a need for more housing association homes.
- 37% feel that any future housing should be to the north of the town, while 41% felt it should be to the east

33% of respondents to the Town Councils survey did not indicate a need for more housing

The results of the Central Bedfordshire 2017 consultation showed 37% of participants felt Sandy needed more affordable homes and 33% felt there was a need for more older generation dwellings.

Many respondents commented that there was a need for more bungalows and that provision of more accommodation for older people would result in the opportunity to downsize while remaining in the area.

Source: Central Bedfordshire Council's Community Plan for Blunham, Moggerhanger, Sandy & Tempsford 2017

Participants in both the Town Council survey and the Central Bedfordshire Consultation highlighted that any housing development would impact heavily on infrastructure that was already stretched and there was a preference for no further development in Sandy until improvements were made to existing infrastructure and services.

Issues Identified in the 2011 Town Plan

Issue	Is this still relevant ?
Represent residents' views regarding types and tenure of housing they would prefer to see in any future development	Yes
The impact of housing development on the Town	Yes
Location of future development	Yes – Consultation resulted in a preference for the North or East of Sandy

Issues Identified through Housing Consultation

Issue	Solution	Action	Who	Next five years	Long term
Concerns over unsustainable growth of Sandy	Support and encourage a CBC Local Plan which does not allocate large numbers of residential dwellings to Sandy	Continue to push the STC Planning Concept document and respond to CBC Local Plan Consultations	STC CBC	✓	
Concerns over inadequate infrastructure to support growing number of residents	Identify areas of concern via the local plan and ensure the Planning Authority is aware and responds to the need for improved services/infrastructure via the Section 106/CIL process	Continue to push the STC Planning Concept document and respond to CBC Local Plan Consultations	STC CBC		✓
Reflect identified need for mixed housing in any development for which permission is granted	Identify need for mixed housing as part of discussions and negotiations on any development which may come forward. Push for up to 35% of new development housing to be affordable housing	Communicate public desire for mixed housing including affordable housing to CBC at early stage of any planning application received.	STC CBC		✓
Need for more dwellings suitable for the elderly to include an increased number of bungalows	Highlight need for more elderly residential care and suitable dwellings to CBC and ensure consideration is duly given during negotiations with developers and any housing allocation given to sandy within the Local Plan	Communicate need for more dwellings suitable for the elderly, particularly bungalows to CBC at early stage of any planning application received	STC CBC		✓
Location of future development	Highlight desired location with perceived benefits to form part of CBC Local Plan	Continue to push the STC Planning Concept document and respond to CBC Local Plan Consultations	STC CBC		✓

Town Centre Economic Activity

This section explores economic activity specifically within Sandy Town Centre and considers issues identified by the 2017 Benchmarking survey commissioned by Sandy Town Council and the input of a town centre focus group. The focus group included representatives from a variety of town centre businesses.

The focus group highlighted that lack of passing footfall was an issue and that they would like to see a greater number of one off and community events to bring people into the town centre. The group commented that there is a shift in Sandy's offering from traditional retail to food and drink and that a greater variety of establishments need to be encouraged.

What you said Sandy needs to focus on;

- An improved retail offer was a key concern for residents. You would like to see a greater variety of shops, including nationally recognised names and a greater number of retail shops.
- A greater variety in the choice of restaurants.
- You felt the town centre needed investment to make it a more visually appealing place to stop and spend time.
- More parking was needed for visitors to the town centre.
- New businesses should be supported by lower business rates.
- Introduction of specialised markets that are prominently located.
- Leisure facilities, such as a cinema located within the town centre.
- More flowers and plants to encourage people to spend time in the area.
- Encourage new traders into the town.

74% felt the potential of local customers was a positive for Sandy

39% felt the physical appearance of Sandy was a positive

54% felt car parking was a negative aspect of Sandy's town centre

The results of the Central Bedfordshire 2017 consultation echoed the results of the Town Councils Benchmark study, with a call for an improved high street offering, a greater variety of shops, more investment in the town centre and support for new businesses starting up.

The consultation also highlights the need to improve links with the RSPB and town centre.

Source: Central Bedfordshire Council's Community Plan for Blunham, Moggerhanger, Sandy & Tempsford 2017

Issues Identified in the 2011 Town Plan

Issue	Is this still relevant ?
Insufficient range of shops in Sandy	Yes
Location of weekly markets	No longer a market in Sandy
Demand for a large supermarket / food store in Sandy	No – Tesco came to Town after a need was shown for a supermarket.

Issues Identified through Town Centre Economic Focus Group and Consultation

Issue	Solution	Action	Who	In the next 5 years	Long Term
Improved retail offer and greater variety of outlets	Invite required retail outlets to occupy vacant premises in Sandy	Identify outlets that Sandy is lacking in. Contact companies offering those outlets and negotiate for them to open in Sandy	STC	✓	✓
Reduction in vacant units	Match vacant units to desired retailers and encourage them to consider units	Identify all vacant units in Sandy and consider their best usage. Write to all relevant retailers	STC	✓	✓
Improvement and investment into the town centre's appearance	Identify areas for improvement within the town centre	Use the CBC Market Match fund to make improvements to town's appearance	STC CBC	✓	
Greater encouragement and support for new business	Reduction in business rates and rent to encourage new shop holders.	Negotiate a reduction in business rates and rent with landlords and local authority.	STC Landlords CBC	✓	✓

	Provide access to a retail consultant via joint fund with CBC.	Explore possibility of joint funding a retail consultant with CBC.	STC CBC	✓	
Community events and markets to bring more footfall into the town centre	Identify community events that would encourage footfall to the town centre	Create a working group to identify and hold/organise suitable town centre events	STC Retailers STC	✓	
	Run seasonal markets	Identify appropriate markets and resources to run them	STC Volunteers	✓	
Improved town centre car parking	Identify and instigate ways to improve town centre car parking	Review the results of CBC's parking survey for Sandy and consider possible solutions to be brought forward in the CBC parking strategy	STC CBC Local businesses Local land owners	✓	✓
		Survey the Town Centre car park possible improvements based upon the results			
Reduction of High Street Banking Facilities	Support existing facilities and push for more facilities within the town	Continue to support Barclays Pop up Bank	STC	✓	✓
		Write to banking providers to encourage them to open a branch in town			

Reduction of High Street Banking Facilities		Investigate other community banking schemes			
Demise of Chamber of Trade	Encourage the development of the Chamber of trade or existence of a new business group for the town	Explore possibility of joint funding a retail consultant with CBC	STC CBC	✓	✓
Lack of footfall within town centre	Work with partners to introduce schemes to encourage footfall	Town Council to join and promote the Greensands Country Partnership to encourage the development of a tourist destination	STC BRCC Businesses	✓	
		Install Greensands Country signage at entrance to town and promote use of logo	STC BRCC Businesses	✓	
		Liaise with RSPB to encourage a greater presence and link with the town centre	STC RSPB	✓	

Transport

This section explores the current picture in terms of issues around transport and related infrastructure in and around Sandy.

In a 2017 consultation carried out by Central Bedfordshire Council 89% of participants indicated there was a need for transport improvements, with 49% wishing to see vehicular improvements and 20% focusing on improvements to bus services. Participants highlighted two main areas of concern;

- Sandy's proximity and connection to the A1
- Traffic flow through Sandy

During the same consultation participants also identified;

- the proposed East West rail link as a valuable opportunity for Sandy which should be pushed
- Upgrading of A1 or a new bypass
- Poor access to the Sunderland Road industrial estate and resulting impact on Fallowfield area
- Concern over HGVs travelling through town
- Town centre gridlock at peak hours
- Cycle/pedestrian link between Sandy, Potton and Biggleswade

Source Central Bedfordshire Council's Community Plan for Blunham, Moggerhanger, Sandy & Tempsford

Issues Identified in the 2011 Town Plan

Issue	Is this still relevant ?
Support improved facilities for Sandy train station	YES
Frequency of trains stopping and departing from train station	YES
Parking at Sandy train station	YES
Support for East-West Rail Link going through Sandy	YES
Improvements to bus service	Not identified as an issue in recent consultation
Increase promotion of existing bus services	In part. Real time information has been installed in stops
Demand for cycle routes	YES
Pedestrian access across the A1 from Bedford Road	YES
Concerns regarding pavement and road surface condition and overgrown vegetation and hedges	YES
Lack of availability off-street parking in residential areas	YES

Concern regarding dangerous parking near junctions	Not identified as an issue in recent consultation
Increase reporting of any problems with street lights	No – people are aware now of how to report problems with streetlights
Street light conversion to LED	YES
Demand for a zebra crossing near St Swithun’s school and at Sunderland Road	YES
Concern about the volume of HGVs passing through the Town	YES
Speeding	NO

Action on 2011 Issues

Issue	Solution	Action	Who	In next 5 years	Long Term
Parking at Sandy Station	Identify additional areas for more parking	Survey of town to identify possible areas and bring them forward to CBC/Network Rail	STC NR CBC	✓	
	Consider additional controls and locations for on street parking	Parking survey of town and streets near to station		✓	
	Pilot a scheme where residents rent out driveways to regular users	Research similar schemes and carryout consultation to see how many houses may take part	STC	✓	
Customer service at Train Station	Extended office hours	Contact National Rail to discuss	STC Network Rail	✓	
Supporting East West Rail link through Sandy	Vocally support a East West Rail link route which will incorporate Sandy	Liaise with Network rail and CBC to push for a route which will benefit Sandy	STC CBC NR		✓

Increase promotion of existing bus services	Work with bus companies and other organisations so timetable information is widely available	Identify places for the publication of timetables and ensure the information is available to the public	STC CBC IS Stagecoach	✓	
Pedestrian Access across the A1 from Bedford Road	Lobby for a safe crossing point for walkers and cyclists across the A1 near the Sandy Bedford Road roundabout	Write to CBC, HA and the local MP to outline the need for a crossing point and ensure it is considered during any future Section 106 developments	STC CBC HE MP		✓
Demand for a zebra crossing near; St Swithun's School Sunderland Road Near the station	Support installation of zebra crossings on the High Street, Sunderland Road and near the station	STC to submit scheme under Rural match fund to establish if CBC would support a crossing and approximate costs	STC CBC	✓	
HGV routes through town centre	Improve directional signage	Identify problem areas and establish what signage is required	STC	✓	
		Lobby CBC for installation of directional signage at agreed locations	STC CBC	✓	
	Gather evidence of HGV levels passing through town to support	Conduct traffic counts over a series of weeks to demonstrate level of HGVs	STC SG19	✓	

	need for improvements				
Street Light Conversion to LED	Currently converting on a small scale. STC to pursue funding for complete conversion.	STC to continue to convert to LED on a light by light basis and pursue funding for conversion of complete lighting stock	STC	✓	

Issues Identified through Transport Consultation

Issue	Solution	Action	Who	In next 5 years	Long Term
Upgrading of the A1 and addressing issues around the Sandy roundabout	Vocally support and encourage improvements to the A1 and lobby for a solution to the Sandy roundabout	Working with other groups to lobby Highways Agency and Local MP	STC HE SG19 MP		✓
Bypass for Sandy	Vocally support and encourage the need for a bypass for Sandy	Working with other groups to lobby Highways Agency and Local MP	STC HE SG19 MP		✓
A1 connection to north of Sandy and routes to industrial areas	Vocally support and encourage the need for improvements between the A1 and industrial area.	Gather evidence to support need for improvements	STC	✓	
		Lobby Highways Agency	STC HE		✓
	Any future development to the north of Sandy to include improvements to A1 access	Work with CBC and any prospective developer that might be granted planning permission to include improvements	STC CBC		✓

		within 106 negotiations			
Lack of cycle/pedestrian connectivity between Sandy, Potton and Biggleswade	Identify areas of possible connectivity	Review of route between towns to highlight areas or possible improvement	STC	✓	
	Work with CBC to increase connectivity on specific areas identified	Liaise with CBC to agree specified areas for improvement and establish timeframe and action	STC CBC	✓	
Improved links between the Sandy Green Wheel	Town Council to continue to support BRCC on development of the Wheel	Council providing Funding for 2018/19. BRCC to summarise anticipated achievements by 2019.	STC BRCC	✓	
	Identify funding streams to ensure continued work to the Wheel	BRCC to identify areas of grant funding, including Section 106	BRCC STC	✓	
Lack of use of cycle paths to Potton and the north	Advertise cycle routes	Advertise cycle routes on website and Facebook	STC	✓	
Lack of town centre parking	Identify ways to improve car parking in town centre	Survey existing parking and identify areas of possible improvement	STC CBC Local businesses Local land owners	✓	
		Review town centre and consider any possible areas for new parking	STC CBC	✓	

Clean up of A1 signage 'clutter'	Request to Highways England for the removal of redundant signage	Liaise with SG19 to identify signage issues to take forward to HE	STC SLL CBC HE	✓	
Improvement of minor issues on stretch of A1 passing Sandy	Highways England to 'tidy up' A1 and more small scale improvements	Liaise with SG19 to identify issues to take forward.	STC SG19 HE	✓	
Lack of Taxi Service providers within the town	Create a directory of taxi service providers	Publish directory of CBC Council approved taxi service providers on our website	STC CBC	✓	
Need for a footpath and streetlighting along New Road	Support a new footpath and streetlighting along New Road	Lobby CBC for a new footpath with streetlighting along New Road	STC CBC	✓	✓
Unsafe road conditions due to HGVs loading along New Road	Introduction and enforcement of loading restrictions	Lobby CBC to enforce parking restrictions along New Road	STC CBC	✓	
Lack of parking capacity in and around Winchester Road Estate	Scheme to increase parking spaces by using redundant garages and planters	Pursue funding for improvements and proposed design with CBC	CBC Aragon	✓	
Need for increased train services to London	Operators to recognise need for increased services per hour	Lobby Thameslink and Great Northern operators and evidence need for increased service	STC Thameslink Great Northern	✓	

Sandy's Long-Term Requirements

It is essential that we get Sandy's long-term priorities right and clearly communicate them to Central Bedfordshire Council and any potential developers. The Community Plan has identified a need for infrastructure or improvements which are outside Town Council's current capacity or resources. The investment for many of the projects or infrastructure identified would need to come forward as a result of developer contributions or grant funding. As such this document seeks to identify a Sandy

community 'vision' which clearly identifies those projects.

The following list will be submitted to Central Bedfordshire Council to be included in their long-term strategies and Section 106 deliberations. The list will also be used by the Town Council when entering into any discussions with developers or the Planning Authority over section 106. The list will also be used by the Council when any opportunity for grant funding arises.

Sandy's Community Vision

What we need

Vision/Requirement	Reasoning
Arts & Culture	
New adaptable multipurpose culture hub to host the Sandy Museum collection amongst other things	Long term issue over no where to hold cultural events and to house the Sandy collection
Health & Wellbeing	
Creation of a new surgery or health care hub	Health care is stretched and unable to meet growing demand. Well planned Health Care solution is required
Housing	
Increased number of bungalows	Lack of suitable housing for older generations
Increased number of dwellings for elderly	Lack of suitable housing for older generations
Increased number of dwellings for affordable housing	Lack of affordable housing for younger generations
Environment	
Completion of the Sandy Green Wheel	Increased usable greenspace and protection of existing areas
Provision of allotment site	Long term need for allotment provision to meet demand in Sandy

Creation of a destination park and garden if a purpose-built football facility results in freeing up Bedford Road.	Sandy does not have a traditional town centre park with flowerbeds and recreation areas. Lack of available space but shift in Bedford Road football could create an opportunity
Sports and Leisure	
Multi use skatepark/BMX facility	Consultation showed desire for skate park. Facility would be more feasible if multi use.
Purpose built football facility for all Sandy based clubs	Lack of quality football facility to meet needs of all Sandy's clubs
Improve existing sporting facility at the Jenkins Pavilion	Current pavilion does not function as well as it might. Investment into enlargement and improvement could benefit several clubs
Town Centre	
Purpose built multi-functional community centre	Lack of central community space in Sandy of sufficient size.
Additional car park	Lack of sufficient parking in Sandy
Transport	
Creation of public toilets at the train station	Long needed improvement for customers
East West Rail connection via Sandy	Town Council supports the long-term ambition to bring the rail line through Sandy and the economic and social benefits this could result in
Pedestrian Access across the A1 from Bedford Road	No safe way to cross the A1 or connect Sandy for pedestrian use
Upgrading of the A1 and addressing issues around the Sandy roundabout	Roundabout results in pollution and congestion in Sandy
Creation of a Bypass for Sandy	Relieve traffic and pollution for Sandy and create and improved A1
Improvements to A1 connection to north of Sandy and routes to industrial areas	Reduce HGV traffic through residential areas

Creation of pavement along New Road, connecting Beeston and Sandy	Address long term safety concern and create pedestrian link between Sandy station and Beeston
Creation of a zebra crossing on High Street near St Swithun's School	Insufficient safe crossing space for children at St Swithuns school
Directional signage for HGVs at Fallowfield and Cambridge Road	Address long term issues of HGVs in residential spaces

The Way Forward

The key to success for Sandy's Community Plan will be ensuring that it is realistic, achievable and sustainable, building on the achievements brought forward under the 2011 Town Plan. Sandy Town Council will be the guardians and drivers of this vision, but it will only be implemented successfully with the help of partners.

Importantly the Town Council has started on a process where it is establishing what the priorities are for Sandy from the ground up. As pressure on housing stock continues and Central Bedfordshire Council continues to review its own Local Plan, it will be crucial to ensure key decision-making authorities and all other organisations are aware of what Sandy needs both now and in its future should it continue to develop in a well thought and sustainable way.

The Community Plan will provide a useful vehicle for the Town Council to prioritise its own work and budgets as well as providing a tool to have its voice heard within Central Bedfordshire.

Sandye Place – A Unique Solution for Sandy

During the drafting of the Town Council's Community Plan, the future of Sandye Place Academy ('SPA') came into question. On the 3rd September 2018 a joint statement from Central Bedfordshire Council and SPA confirmed that the Department for Education had reached a decision to close the school at the end of the 2019 academic term.

In the summer of 2018 the Town Council supported an application by the Sandy Historical Research Group to make Sandye Place an asset of community value in recognition of the vital role the facility plays and must continue to play within the town. The outcome of this application is to be determined by Central Bedfordshire Council.

The announced closure of Sandye Place Academy brings the future use of a strategically important site into focus. The site, including the entirety of the land and buildings, is under the ownership of Central Bedfordshire Council and has the potential to offer a solution to numerous issues raised within this Community Plan.



The central location of Sandye Place gives it strategic value as a community serving facility

The location of Sandye Place in the centre of the town, along with the adaptability of existing buildings and available space it offers makes it a key site in the future development of a sustainable and thriving Sandy. It also has the potential to help bring people back into the town centre, increasing footfall and adding to efforts to revive the High Street.



The existing facilities and space which form part of Sandye Place could be of huge strategic benefit

The importance of protecting the future use of Sandye Place as a community facility is crucial and as such forms a key action for Sandy Town Council. Although the Council has no ownership, rights or powers related to Sandye Place it is actively pressing Central Bedfordshire Council to work with the Town Council and other community partners to use Sandye Place to benefit the future development, growth and enhancement of what Sandy is able to offer its communities.

Benefiting Sandy

The facilities offered by Sandye Place could help the Council and its partners address a variety of the town's needs which have come forward in consultation during the development of the Community Plan. The following section highlights issues raised in the previous key theme documents for which Sandye Place could form part of a solution.

Arts and Culture

- The existing facilities at Sandye Place could be utilised for the provision of community space for the creation and experience of art and culture, including providing a town centre location for a museum.
- The need for new community venues for use by community groups and for the hosting of cultural experiences has been identified in consultation. The existing facilities could be adapted to provide the town with a such a venue.

Sports and Leisure

- Public consultation held by STC and CBC has continuously resulted in the identification of the need for a swimming pool in Sandy. The existing pool at Sandye place and its surrounding facilities could be altered and offers an adaptable and practical solution to providing Sandy with a community pool.
- The Community Plan identifies the need for a purpose built or designed football facility. Sandye Place could provide either the location for such a facility or by receiving relocated facilities free up space elsewhere in the town.
- Consultation has identified the need for both increased youth facilities, multi-use leisure facilities and additional sports facilities. All this provision could be met by the well-planned adaption of Sandye Place's existing playing fields, existing youth centre and buildings, including the largest auditorium in Sandy.



Environment Health and Wellbeing

- Consultation showed that a key concern for residents was the protection and enhancement of green spaces and the river Ivel, a section of which runs through Sandye Place.
- The facilities at Sandye Place would provide a suitable location for the development of a medical centre to meet the pressure which is placed on existing practices and will only increase as Sandy develops.
- The large amount of land offered by Sandye Place would allow the Council to meet one of its longest standing objectives via the provision of an allotment site somewhere on the available land.

Town Centre Economic Activity

Social and leisure activity in the Town Centre, based on a well-located town centre site, such as Sandye Place could provide a significant enhancement to the economic sustainability of the town centre. The development of community facilities at the Sandye Place site would inevitably lead to increased activity and footfall at a site immediately adjacent to the towns central retail and social area. Land available would also provide potential use as increased parking provision.

Sandye Place already provides a location for two of the town's biggest community events and could continue to be used as a key event site in Sandy, including for the reestablishment of markets.

Long Term Community Vision

Sandye Place could provide the space for many of the facilities that the town currently lacks. In many cases it is arguable that the location close to the Town Centre is highly positive. However, the use of such a site would require careful and detailed long-term planning. The availability of a large town centre site with existing facilities would enable that planning to take place in a coherent way with an eye to the future. Use of Sandye Place would provide all organisations with the invaluable opportunity to plan to implement the facilities the town needs, rather than simply identifying them.



The differing buildings already on site provide a unique opportunity to coherently plan for the future of Sandy

SANDY TOWN COUNCIL**DATE:** 17 September 2018**AUTHOR:** Town Clerk**SUBJECT:** Anglian Water Rates**1. Summary**

- 1.1 At a meeting of the Development Scrutiny Committee on 3rd September 2018 the committee asked that information from an article purporting potential increases in water rates be considered by Full Council.
- 1.2 Relevant information from the article is summarised below for Members' information.

2. Information

- 2.1 An article in The Times, published on Monday 3rd September 2018 reported that Anglian Water will be seeking above-inflation increases in bills for the 2.3 million households it serves in the east of England. Anglian Water have stated that the need for the money is to cope with the increased housing boom in the driest region of the country.
- 2.2 Anglian Water is geographically England's largest supplier, stretching between the estuaries of the Humber and the Thames and with average rainfall 30 per cent lower than the rest of the country.
- 2.3 It is reported that of the next 1 million homes to be built in the UK, about a fifth will be in the Anglian region. Northampton, Milton Keynes, Norwich and Cambridge are among the fastest growing cities and towns in the country.
- 2.4 It is reported that Anglian Water will ask Ofwat for an annual rise in bills of 1 per cent over the RPI of inflation to help pay for a 30 per cent increase in spending to 6.5 billion over five years to help to build pipelines to bring water south from the wetter, northern part of the region in Humberside and Lincolnshire, directing water to new housing.
- 2.5 Anglian's Chief Executive has stated that "We believe this is the right plan for the unique nature of our region, being both the driest and one of the fastest growing."
– *Source: Robert Lea, Industrial Editor, The Times*
- 2.6 Members of the Development Scrutiny Committee expressed concern over the articles content and believed that developers should be responsible for the costs associated with utility infrastructure.

SANDY TOWN COUNCIL

DATE: 17 September 2018

AUTHOR: Town Clerk

SUBJECT: Councillor Surgery Review

1. Summary

- 1.1 At a meeting of the Town Council on 18 December 2017 it was agreed that a series of five Councillor surgeries would be held bi-monthly from 10am to 12 noon. Following this initial period, it was agreed that the success of the surgeries would be reviewed by Town Council.

2. Information

- 2.1 The Council has held five Councillor surgeries during 2018. Each surgery was held in the Town Council Chamber between 10am and 12 noon. Some surgeries were accompanied by community groups.

Date	CLRs Present	Community Group	Public Attendance
13 th January	Hill / Sutton	None	3
10 th March	Blaine / Scott / Thompson	Sandy Guild	2
12 th May	Thompson	Ukulele Group	3
14 th July	Pettitt / Aldis (CO – Reserve)	None	3
6 th September	Thompson / Knagg	None	2

- 2.2 Issues raised at the meetings and the organisations which would have responsibility or involvement in rectifying those concerns, a summary of issues is detailed below;

Issues Raised	Responsibility
Concerns over unauthorised encampment and access	STC/CBC/Police
Potholes (Western Way)	CBC
St Swithuns Crossing Guard	CBC
Poor condition of the village hall car park track	STC
Addition to the Council Community Groups database	STC
Fly tipping in the Car Park	STC/CBC
General fly tipping and waste	CBC
Blocked right of way (locked gate)	CBC
Maintenance of hedging on STC land	STC

Lack of a stop cock in the street to turn off water supplies to individual properties (St Swithuns Way)	Anglian Water
Clearance of Highway drainage gullies	CBC
Neighbourly disputes	CBC/Police
Erection of pavement fencing between A1 and residential property	Highways England / CBC
Grass Cutting (Highways)	CBC

- 2.3 Members are asked to consider whether they wish to continue with Councillor Surgeries and if so, whether they wish to change the location or format in which the surgeries are run.

SANDY TOWN COUNCIL**DATE:** 17 September 2018**AUTHOR:** Town Clerk**SUBJECT:** CCTV Statistics**1. CCTV Incident Figures**

- 1.1 The figures below come from client reports available on the Hertfordshire CCTV Partnership website and from an incident report provided to the Council. The figures are only for monitored incidents on CCTV equipment and do not include non-monitored events and therefore do not show an overall picture of crime or police activity. The table provides figures available figures for the last 12 months.

Month	Monitored Incidents	Police Attended	Arrests Monitored
August 2017	2	1	-
September 2017	0	-	-
October 2017	5	2	-
November 2017	0	-	-
December 2017	3	2	-
January 2018	5	3	-
February 2018	2	1	-
March 2018	1	1	-
April 2018	5	3	-
May 2018	0	-	-
June 2018	1	-	-
July 2018	2	2	-
August 2018	2	2	-

- 1.2 In June and July 2018 CCTV received three requests from the Police for CCTV evidence. These were linked to burglaries and criminal damage.

2. July and August 2018 Breakdown

Camera	Incident	Action
Market Square	Burglary	CCTV passed evidence and descriptions to police. Police attended.
Co-op	Burglary	Police requested a live view following alarm activation. Police attended. Details from CCTV footage passed to police.
Budgens	Unauthorised access	CCTV alerted police. Police attended site in response to incident.
Budgens	Deception/ Fraud	CCTV alerted police and monitored situation. Police attended in response to incident.

SANDY TOWN COUNCIL**DATE:** 17 September 2018**AUTHOR:** Administrator**SUBJECT:** Sandy Crime Statistics for August 2018**Summary**

The following statistics are for Members' information. The information is received from Central Bedfordshire Council and can be viewed online at <https://www.police.uk/bedfordshire/68/crime/>. Anti-social behaviour is not included in the data provided. Please also note that the format of this report is slightly different to previous reports, for example street name is not available this time, although it is anticipated that this will appear again on future reports. Offences have been listed in chronological order according to when the offence was recorded, rather than committed.

August 2018

The August reporting period is for 28 days from 1st to 28th August inclusive

August 2018	OFFENCE CLASS DESCRIPTION	RECORDED	COMMITTED	TIMES
	ASSAULT OCCASIONING ACTUAL BODILY HARM (ABH)	02/08/2018	02/08/2018	19:15 to 19:40
	ASSAULT OCCASIONING ACTUAL BODILY HARM (ABH)	02/08/2018	02/08/2018	00:00
	ASSAULT OCCASIONING ACTUAL BODILY HARM (ABH)	02/08/2018	02/08/2018	19:15 to 23:39
	ASSAULT OCCASIONING ACTUAL BODILY HARM (ABH)	02/08/2018	02/08/2018	00:00
	THEFT OF A MOTOR VEHICLE	02/08/2018	01/08/2018	14:41
	ASSAULT WITHOUT INJURY COMMON ASSAULT & BATTERY	03/08/2018	02/08/2018	18:20 to 20:00
	GBH SERIOUS WOUND WITHOUT INTENT (S20)	03/08/2018	01/08/2018	20:00 to 08:00
	THEFT FROM THE PERSON OF ANOTHER	03/08/2018	02/08/2018	19:30

AGENDA ITEM 16

APPENDIX X

THEFT FROM A MOTOR VEHICLE	04/08/2018	03/08/2018	14:00 to 15:00
BURGLARY – RESIDENTIAL – DWELLING	04/08/2018	02/08/2018	14:00 to 10:30
ASSAULT OCCASIONING ACTUAL BODILY HARM (ABH)	06/08/2018	06/08/2018	00:45
SENDING LETTERS ETC WITH INTENT TO CAUSE DISTRESS/ANXIETY	06/08/2018	06/06/2017	-----
THEFT FROM SHOPS AND STALLS	06/08/2018	05/08/2018	13:36 to 14:00
OTHER CRIMINAL DAMAGE TO A VEHICLE (£5,000 AND OVER)	08/08/2018	07/08/2018	01:30
ASSAULT OCCASIONING ACTUAL BODILY HARM (ABH)	09/08/2018	20/07/2018	00:00
ASSAULT OCCASIONING ACTUAL BODILY HARM (ABH)	09/08/2018	20/07/2018	00:00
ASSAULT OCCASIONING ACTUAL BODILY HARM (ABH)	10/08/2018	04/08/2018	00:00 to 23:00
SENDING LETTERS ETC WITH INTENT TO CAUSE DISTRESS/ANXIETY	10/08/2018	06/08/2018	00:00
SENDING LETTERS ETC WITH INTENT TO CAUSE DISTRESS/ANXIETY	10/08/2018	10/08/2018	09:12
THEFT FROM SHOPS AND STALLS	12/08/2018	08/08/2018	20:27 to 20:32
BURGLARY – BUSINESS & COMMUNITY	13/08/2018	13/08/2018	02:09
OTHER CRIMINAL DAMAGE TO VEHICLE (UNDER £5,000)	16/08/2018	15/08/2018	21:30
DANGEROUS DRIVING	17/08/2018	08/11/2017	22:00 to 22:11
SENDING LETTERS ETC WITH INTENT TO CAUSE DISTRESS/ANXIETY	17/08/2018	16/08/2018	08:00 to 11:30
THEFT FROM SHOPS AND STALLS	17/08/2018	16/08/2018	15:00 to 15:30
SEC 5 POA HARASSMENT, ALARM OR DISTRESS	18/08/2018	18/08/2018	11:05
OTHER CRIMINAL DAMAGE TO A DWELLING (UNDER £5,000)	20/08/2018	20/08/2018	-----
ATTEMPTED – THEFT FROM SHOPS & STALLS	20/08/2018	20/08/2018	16:31 to 16:45
ASSAULT WITHOUT INJURY – COMMON ASSAULT AND BATTERY	21/08/2018	20/08/2018	21:05
OTHER CRIMINAL DAMAGE TO A VEHICLE (UNDER £5,000)	21/08/2018	20/08/2018	18:20 to 19:00
OTHER CRIMINAL DAMAGE, OTHER (UNDER £5,000)	21/08/2018	20/08/2018	21:05
THEFT FROM A MOTOR VEHICLE	21/08/2018	06/08/2018	00:01 to 16:00
UNAUTHORISED TAKING OF A MOTOR VEHICLE (DOES NOT INCLUDE 'DRIVING OR BEING CARRIED KNOWING MOTOR VEHICLE HAS BEEN TAKEN')	21/08/2018	20/08/2018	23:00 to 04:15
BURGLARY – BUSINESS AND COMMUNITY	22/08/2018	21/08/2018	18:00 to 08:50
ASSAULT WITHOUT INJURY – COMMON ASSAULT AND BATTERY	22/08/2018	21/08/2018	22:30 to 23:08
MAKING OFF WITHOUT PAYMENT	22/08/2018	22/08/2018	16:35
THEFT FROM SHOPS AND STALLS	22/08/2018	08/08/2018	-----

AGENDA ITEM 16**APPENDIX X**

SENDING LETTERS ETC WITH INTENT TO CAUSE DISTRESS/ANXIETY	25/08/2018	25/08/2018	18:00 to 19:00
OTHER CRIMINAL DAMAGE TO A VEHICLE (UNDER £5,000)	26/08/2018	26/08/2018	02:38 to 02:52
ASSAULT OCCASIONING ACTUAL BODILY HARM (ABH)	26/08/2018	25/08/2018	02:00 to 03:26
THEFT FROM SHOPS AND STALLS	27/08/2018	27/08/2018	10:00 to 15:00
THEFT FROM SHOPS AND STALLS	28/08/2018	25/08/2018	12:05
THEFT FROM SHOPS AND STALLS	28/08/2018	26/08/2018	10:30
THEFT FROM SHOPS AND STALLS	28/08/2018	28/08/2018	09:15 to 09:24
THEFT FROM A MOTOR VEHICLE	29/08/2018	28/08/2018	17:00 to 07:25

22 (Sandy) Squadron Air Cadets ATC/ACF Cadet Centre, Alnwick Close, Sandy, Bedfordshire, SG19 1UA



Minutes from the AGM of Civilian Committee for 22 (Sandy) Squadron

26th July 2018

Present:

James Mansion (JM) – Chairman

Tim Brain (Wing)

Sally Walsh (SW) – Treasurer

Colin Osborne (CO) – Honorary President

Jeffery Henshaw (JH) –Squadron Adjutant (Acting C.O)

Sue Brain (Guest)

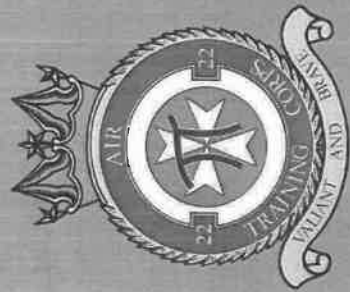
Jane Godley (JG) – Squadron Chaplain

	Subject	
1.	Chairman’s Welcome & Introductions – The Chairman opened the meeting at 20:15 and welcomed all present – The Chairman then introduced the Civilian Committee & Staff to the guests present	
2.	Apologies For Absence – Angus Foster (Secretary), Bob Jackson, David Gwilliam, Dan Garfoot, Martin Blatch & Susan Sutton	
3.	Minutes Of The Last Civilian Committee Meeting Held On The 14th June 2018 – There were no matters arising regarding the last meeting and so the Chairman signed the copy as a true record of proceedings	
4.	<p>Chairman’s Report – The Chairman started his report by thanking CI Jeffery Henshaw for yet another year of commitment and stated that without his continued support there would have been occasions where the Squadron would not have been able to operate effectively. It was also noted that in May 2018, CI Henshaw was lucky enough to attend the Queen’s Garden Party at Buckingham Palace - The award was a Lord-Lieutenants Certificate for Meritorious Service by HM Lord-Lieutenant of Bedfordshire, which is awarded for outstanding service within the cadet and reserve forces, with a minimum of 8 years’ service. CI Henshaw was nominated by the Wing Commander for the award due to the work he had done over the years with the Squadron, and the garden party invitation was a result of the award.</p> <p>He also thanked Colin Osborne, our Honorary President for his continued support along with the other members of the Committee.</p> <p>The Chairman also wanted to congratulate the Squadron & Cadets on their success during the 2018 Wing Field Competition, but wanted to leave the details for the CO’s Report, which was following.</p>	



5.	<p>Treasurer's Report – The Treasurer stated that the current state of accounts is in credit (£8,592 + £78 petty cash) Fundraising is still an important part of the Squadron activities. Full details & F60 attached</p>	
6.	<p>CO's Report – CI Jeffery Henshaw prepared a presentation highlighting the success and achievements of the Squadron during 2018 and a copy is attached</p>	
7.	<p>Election Of Officers –</p> <p>Election Of Chairman – Susan Sutton proposed that James Mansion be re-elected for 2018 & this was seconded by Colin Osborne</p> <p>Election Of Treasurer – Susan Sutton proposed that Sally Walsh be re-elected for 2018 & this was seconded by Colin Osborne</p> <p>Election Of Secretary – Susan Sutton proposed Angus Foster be re-elected for 2018 & this was seconded by Colin Osborne</p> <p>The elections were all unopposed</p>	
8.	<p>Election Of Committee Members – Susan Sutton, Bob Jackson, Dan Garfoot, David Gwilliam & Martin Blatch were re-elected as a Committee members for 2018 – The Chairman thanked them for their continued support</p> <p>Honorary President – Colin Osborne confirmed his position of Honorary President for 2018. This was unchallenged & the Chairman & Committee thanked him for his time & continued support</p> <p>Squadron Chaplain – During the evening, Jane Godley confirmed her position as the Squadron Chaplain for – The Chairman & Committee thanked for her continued support</p>	
9.	<p>Any Other Business –</p> <p>During the evening 3 cadets joined the meeting and gave the Committee reviews</p>	
	<p>Date Of Next Meeting</p> <p>To Be Confirmed – Suggested End May 2019</p>	

2017 - 2018 YEAR REVIEW
CIVILIAN COMMITTEE AGM



THE LAST TWELVE MONTHS

	2015	2016	2017	2018*
Cadet Numbers	21	26	27	30
Average Parade Strength	13	19	19	21



3rd best for Average Parade Strength in the Wing

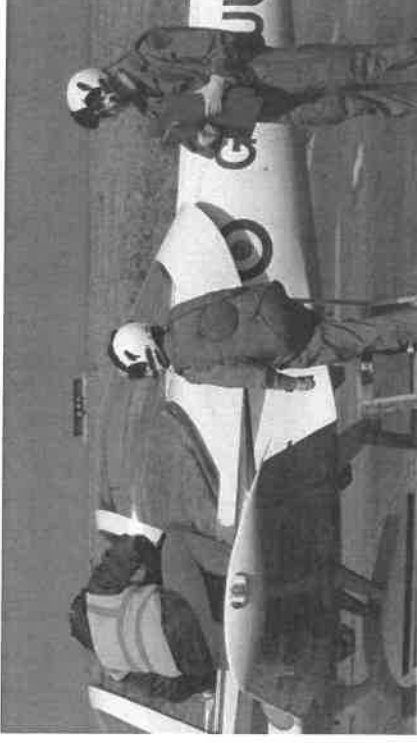
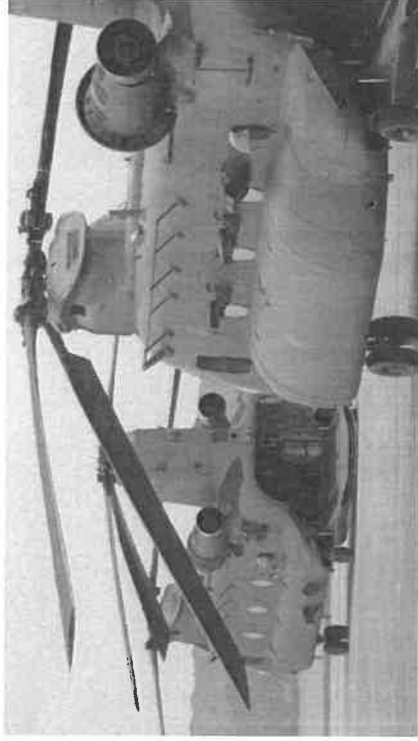
3rd in the Walker Trophy Ranking out of 30 Squadrons



FLYING & GLIDING

In the last 12 months cadets have had 13 flights in RAF Grob Tutor Aircraft

Additional 4 scheduled for August



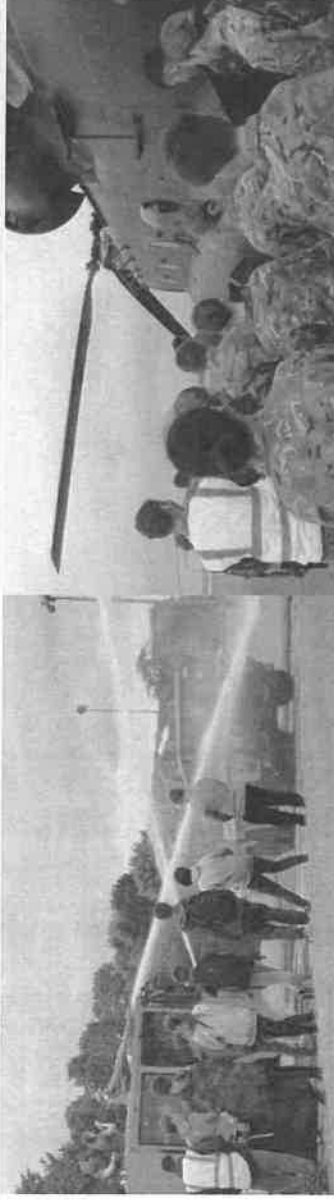
One cadet completed both the Blue Badge Gliding & Flying Training

5 Cadets also flew in the Chinook Helicopter
Scored highest for flying in Walker Trophy Rankings



CAMPS

	Cadets Attending
Easter Camp (2018)	10
Summer Camp (RAF Odiham 2017)	7
RIAT Camp (RAF Fairford 2018)	3
Drill & Ceremonial	1
Adventure Training Camps	2
Overseas Camp (Germany 2017)	1



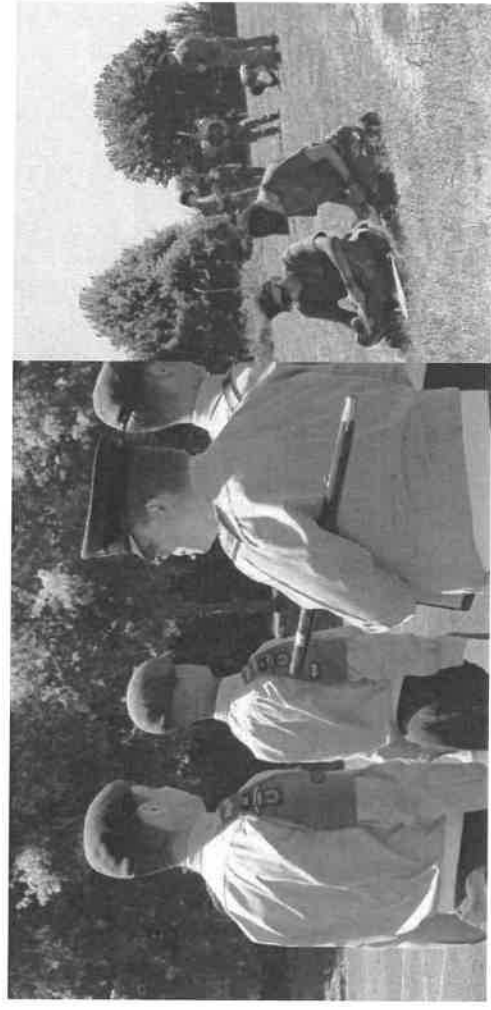
WING FIELD WEEKEND

19 Cadets Attended (2018)

7th Place Overall

7th Drill Competition

Squadron also organised two of exercises



AWARD & ACHIEVEMENTS

- 1 Bronze Communications Badge
- 6 Bronze Cyber Badges
- 2 Gold Road Marching Badges (Nijmegen March)
- 6 BTEC's in Aviation Studies
- 5 Cadet Promotions
- 2nd Inter-Squadron Orienteering



AWARD & ACHIEVEMENTS

- Davies Cup Award – 2017 CI Henshaw & 2018 CI Rowson-Brown
- Lord's Lieutenant's Certificate for Meritorious Service – CI Henshaw
- 2nd in Staff Media Communication,
- 3rd in the Staff Photographic



SQUADRON IN THE COMMUNITY

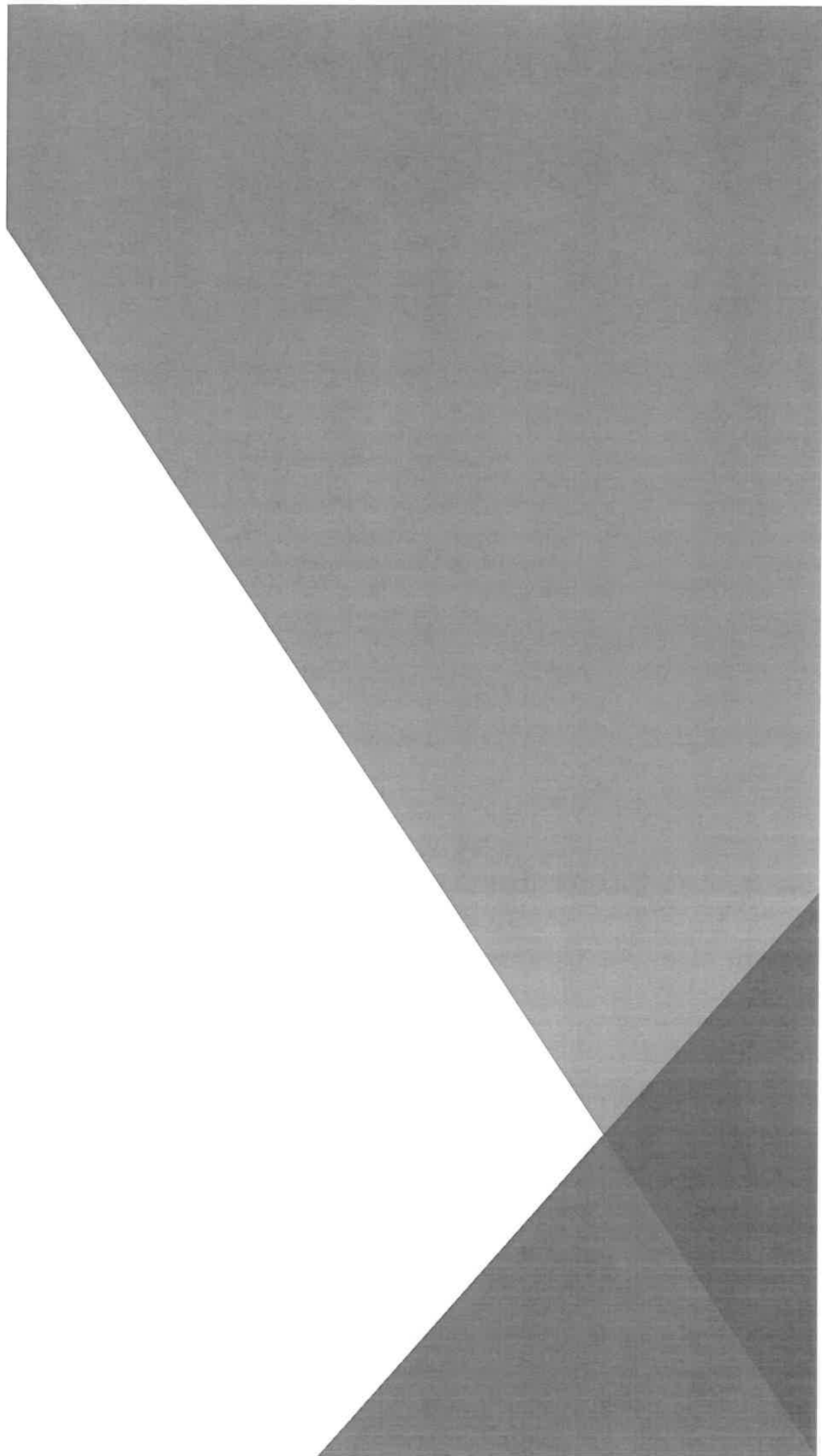
- ATC Sunday Parade – Bedford
- Sandy Mayor's Civic Service
- Sandy Carnival
- Remembrance Sunday Parade
- Sandy Christmas Lights
- Ickwell Mayday Festival
- Sandy War Memorial Rededication
- 2500 Sqn Freedom Parade



UPCOMING THIS YEAR

- RAF Cosford Camp
- Cyprus Camp
- National Shooting Camp
- Fairbourne AT Camp
- Sandy Show Car Parking
- Sandy Christmas Lights





Clerk

From: Louise Ashmore <louise.ashmore@batpc.co.uk>
Sent: 23 August 2018 09:14
To: 'Louise Ashmore'
Cc: 'Tracy Moorhouse'
Subject: BATPC AGM 2018 - formal notice and call for registrations

To: The Clerk to BATPC Member Councils (electorate > 1500)

I hereby give notice that the Association's Annual General Meeting will take place:

- On **Thursday** 18th October 2018 at 7.30 pm
- In Cople Village Hall, Grange Lane, Cople MK44 3TT
- Refreshments will be available before the meeting from 7.00 pm.

Confirmed guest speaker will be Martin Tugwell, Programme Director, England's Economic Heartland. Martin will bring delegates up to date on the latest position with regards to transport and communications links in the EEH area.

In accordance with our constitution **three representatives** from member councils with an electorate of 1500 or more may vote on any business at the meeting. The appropriate number of voting cards will be issued at the meeting.

Would you please email to Tracy Moorhouse admin@batpc.co.uk by latest 21st September 2018 the **names** and **direct email addresses** for your voting representatives. Papers for the AGM will be emailed direct to representatives, three weeks in advance of the AGM.

With thanks

Louise

Louise Ashmore
County Officer - Bedfordshire Association of Town & Parish Councils
Suite 11, Baystrait House
15 Station Road, Biggleswade, Beds SG18 8AL
Tel: 01767 312669

This e-mail and any files transmitted with it are confidential and intended solely for the use of the individual or entity to whom they are addressed. If you have received this e-mail in error, please advise the sender immediately by using the reply facility in your e-mail software. Please also destroy and delete the message from your computer. Any modification of the contents of this e-mail is strictly prohibited unless expressly authorised by the sender.

Save energy, money and the environment - is it necessary to print this message?